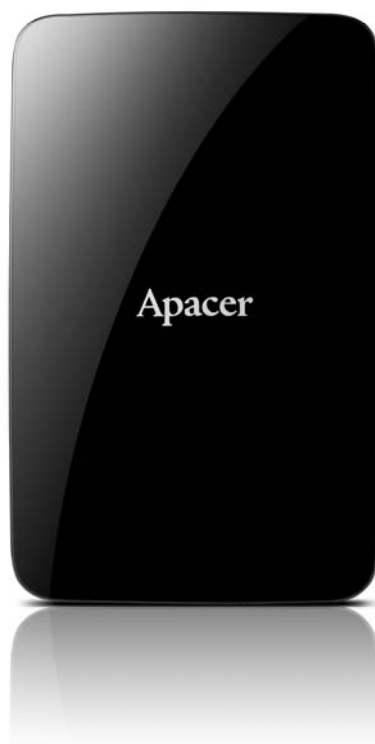


# Apacer USB 3.0 2.5" Portable Hard Drive



AC 233

User's Manual

Version 1.0

# For Your Safety

## Precautions

- To prevent electric shock or other injury, please do not disassemble or reassemble this device.
- To prevent fire, electric shock, or device malfunction, please keep this device away from wet environment such as a bathroom or any contact with liquid.
- During operation, do not expose this device under the temperature above 55°C (131°F) or below 5°C (41°F) for optimal performances.
- Avoid placing the device near a source of heat such as heater or air conditioner, or in an area with strong magnetic fields or excessive vibration, or exposing it to direct sunlight.
- Never insert any metallic subject into the device to avoid any risk of electrical shock, fire, short-circuiting, or dangerous emission.
- This product is an electronic device; please avoid dropping it or subjecting it to other severe shock.
- Do not place heavy objects on the top of the device or excessive force on it.
- Avoid squeezing the device to prevent from damage of the internal HDD.
- When carrying the device, always put it in proper protection to avoid physical contact.

## Warnings

- Carefully unpack the contents of the product package.
- Apacer is not held responsible for data loss or damage during operation.
- Do not disconnect, power off, or restart the device while jobs in progress, otherwise it may cause a program error.
- No liability shall be taken by Apacer for any damage to or loss of any program, data, or other information stored on any media or any part of this device, caused by misuse, improper handling, when the device unit is in the possession of someone other than Apacer. Please refer to Warranty on our official website for further information.
- The contents of this documentation are subject to change without notices.

## Reminders

- **Back up your data regularly**, either to a computer or another storage device. Apacer assumes no liability to data loss or damage during operation.
- Most of the screenshots images about operating the unit are based on Windows XP.

## Table of contents

<b>For Your Safety</b> .....	<b>1</b>
Precautions .....	1
Warnings .....	1
Reminders.....	1
<b>Introduction</b> .....	<b>3</b>
<b>Product Features</b> .....	<b>3</b>
<b>Diagram of AC233</b> .....	<b>4</b>
<b>Package Contents</b> .....	<b>4</b>
<b>System Requirements</b> .....	<b>4</b>
<b>Connect to Computer and Data File Transmission</b> .....	<b>4</b>
Disconnecting AC233 from the Host Computer .....	5
<b>Reformatting AC233</b> .....	<b>6</b>
For Windows Users .....	6
Regarding Partitioning Your AC233 on Windows .....	8
For Mac Users .....	13
<b>Troubleshooting</b> .....	<b>15</b>
<b>Service and Support</b> .....	<b>16</b>
<b>Product Specifications</b> .....	<b>16</b>

## λ Introduction

Thank you for purchasing the Apacer USB 3.0 2.5" Portable Hard Drive. This ultra-speed, stylish and compact designed USB storage with huge capacities is your ideal portable hard drive for transferring and storing your files and even multimedia ones. In terms of transporting, this slim and light weighted portable hard drive is powered by USB, making it highly convenient to travel around with it. This manual provides information for using many of the handy features of this device. Please read this manual carefully before using the unit and keep it for future reference.

This manual contains important safety measures and operational information, so please read all the information carefully before you use the device in case of unexpected accidents.

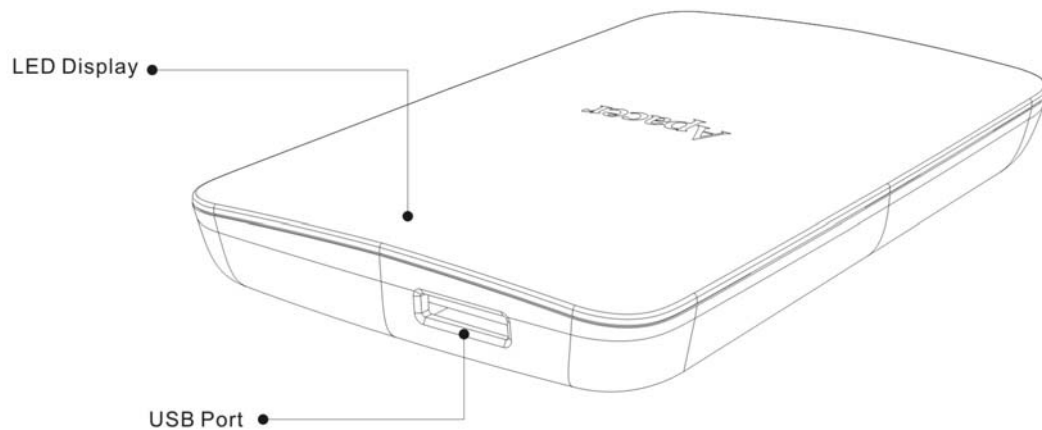
We assume no responsibility for the errors, omissions, or updates of this document, nor for the data or files lost of the device.

Microsoft Windows is a trademark of Microsoft Corporation. Mac OS X is a trademark of Apple Inc. Trademarks of other products mentioned in this user's manual are owned by their respective companies or organizations.

## λ Product Features

- USB 3.0 compliant 2.5" Portable Hard Drive, backward compatible with USB 2.0 interface
- "Streamline Shark" curve shape design
- Smart power management of auto sleep mode
- Supported capacities: 500GB, 750GB, or 1TB
- LED Indicators for data access: red for USB 2.0; blue for USB 3.0

## λ Diagram of AC233



## λ Package Contents

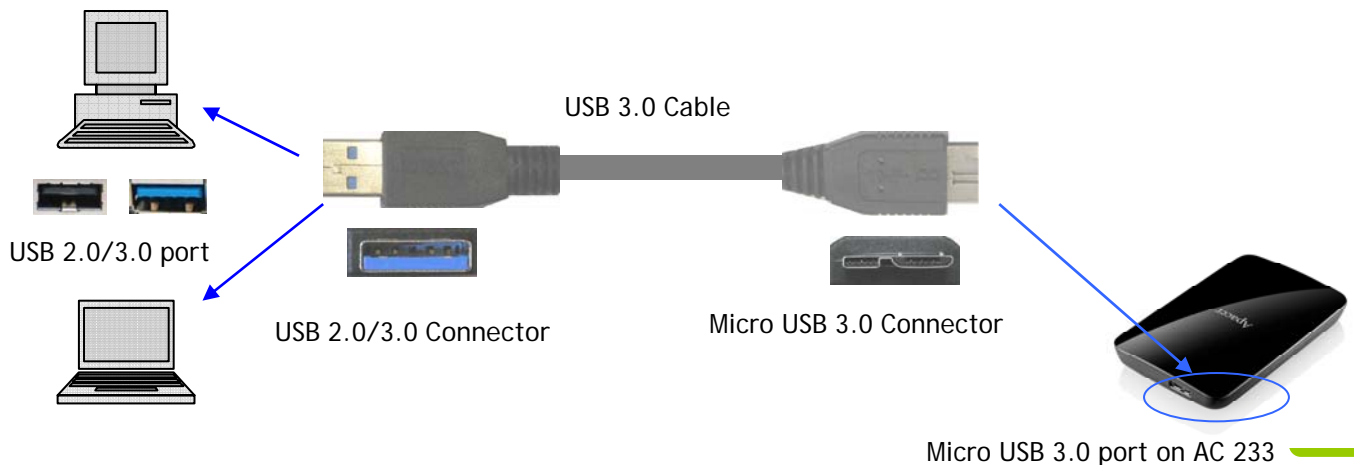
- Apacer Portable Hard Drive AC233 x 1
- USB 3.0 cable x 1
- Quick Start Guide x 1

## λ System Requirements

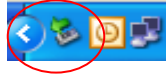
- A desktop, laptop, or tablet computer system with a working USB port, preferably 2.0 or above.
- For USB2.0: Win2000 SP4 / Windows XP SP3 / Vista -32bit / Windows 7 - 32,64bit / Mac OSX 10.4 or later/ Linux Kernel: 2.6.4 or above
- For USB3.0 : Windows XP SP3 / Vista -32bit / Windows 7 - 32,64bit / Linux Kernel: 2.6.4 or above

## λ Connect to Computer and Data File Transmission

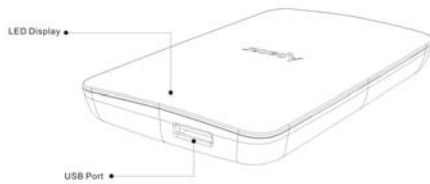
1. Connect the Micro USB 3.0 connector to the USB 3.0 port on your AC233. Then connect the USB 2.0/3.0 connector to the USB 2.0/3.0 port on a computer (USB 3.0 ports for best performance).



- AC233 will power on and appear on your host computer system in a few seconds. The “found new hardware” message will appear with the icon in the system tray.



The LED indicator on your AC233 will indicate if you have properly connected it to a computer. For instance, when the LED appears in red color, it means you have established connection via USB 2.0 interface. When the LED appears in blue color, it indicates you have established connection via USB 3.0 interface.



LED lights in blue:  
connection established via USB 3.0  
LED lights in red:  
connection established via USB 2.0

- Select and organize files and folders that you want to transfer to your AC233.

#### Note:

To run at USB 3.0 transfer rate, this Apacer drive is required to work with standard USB3.0 interface and relevant drivers. For questions about whether your computer can operate at USB 3.0 or not, please refer to the user manual or the provider of your computer system.

Please try not to use a USB hub to establish the connection. The hub can not supply enough power.

### Disconnecting AC233 from the Host Computer

- Never disconnect, power off, or restart the device while jobs in progress, otherwise it may cause a program error.
- For Windows users, always use “Safely Remove Hardware” method before unplugging AC233 from the computer.
  - Right click on the attached hardware icon, the one with a green arrow. The message “Safely Remove Hardware” will appear.



- A window displaying a list of attached devices to your computer will appear. Click “Stop” and you will see the message “safe to remove hardware”. Sometimes, when there is only one device attached, the “Safe to Remove Hardware” message will appear directly.
- For Mac OS users, locate the attached device icon and open the Finder, and click the Eject.

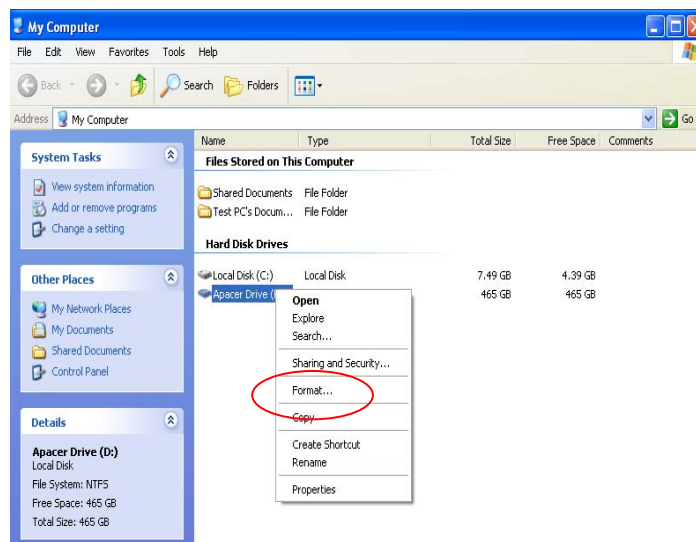
## λ Reformatting AC233

### For Windows Users

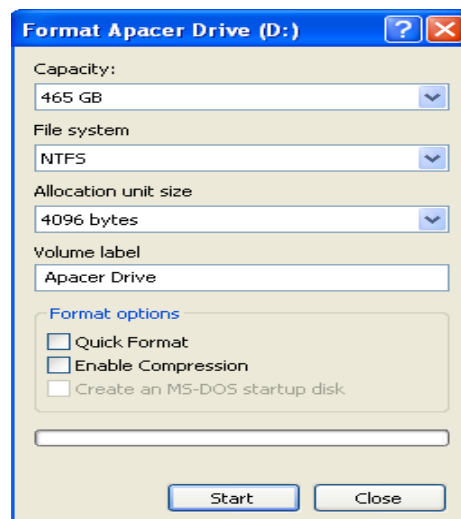
Please follow the steps below to reformat your AC233 hard drive.

**Reminder:** Disk formatting will eliminate all the data in your AC233. Back up the data before you start to format your drive. In addition, the images shown below are based on Windows XP.

1. Connect your AC233 hard drive to an unoccupied USB 2.0/3.0 port of a computer with Windows operating system through the provided USB cable. (See "System Requirements" for the list of supported operating systems).
2. Go to "My Computer", and right click on the newly added hard drive icon. Then, select "Format". The name of the drive can be renamed. Regarding the name of the drive and the drive letter, it appears in default defined by Windows once detected (such as "Local Disk", "Removable Storage"). For the drive letter, it may vary.

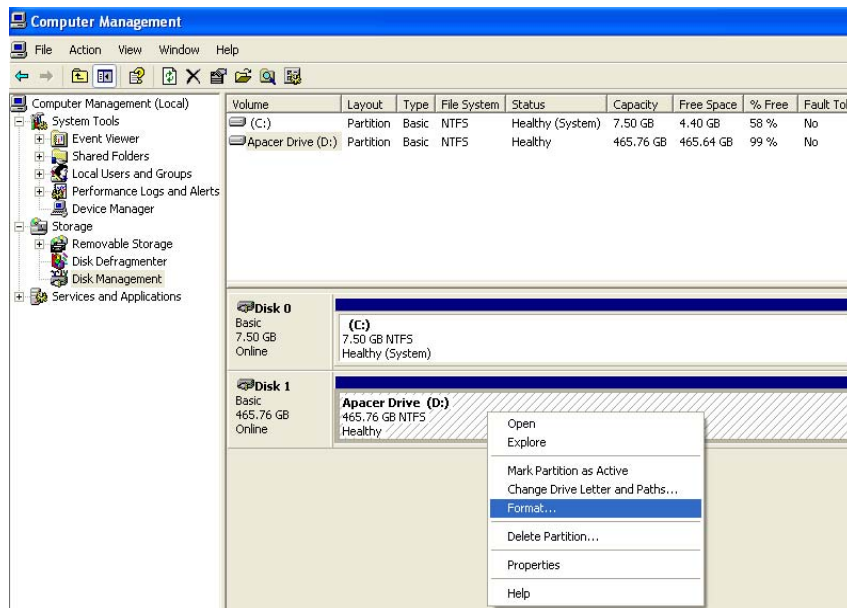


3. A format option window will pop up. Please select the "File System" (NTFS/FAT32, the default is NTFS for large capacity), name the volume label or enable "Quick Format"/"Enable Compression". Then click on "Start" and wait for it to complete.

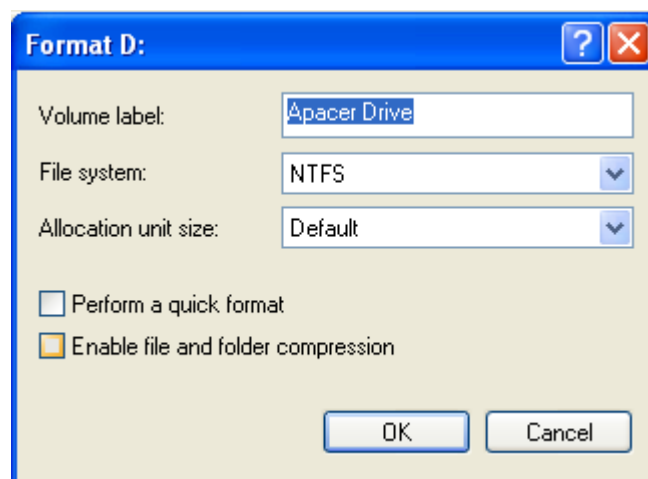


## Alternative Method

1. Once the AC233 is properly connected to a computer, right click on “My Computer” and select “Management” to enter the “Computer Management” window.
2. Go to “Disk Management” and right click on the newly added disk drive. Then select “Format”. Regarding the name of the drive and the drive letter, it appears in names defined by the Windows once detected (such as “Local Disk”, “Removable Storage”). For the drive letter, it may vary.



3. A format option window will pop up. Please select the “File System” (NTFS/FAT32, the default is NTFS for large capacity), name the volume label or enable “Quick Format”/“Enable Compression”. Then click on “Start” and wait for it to complete.



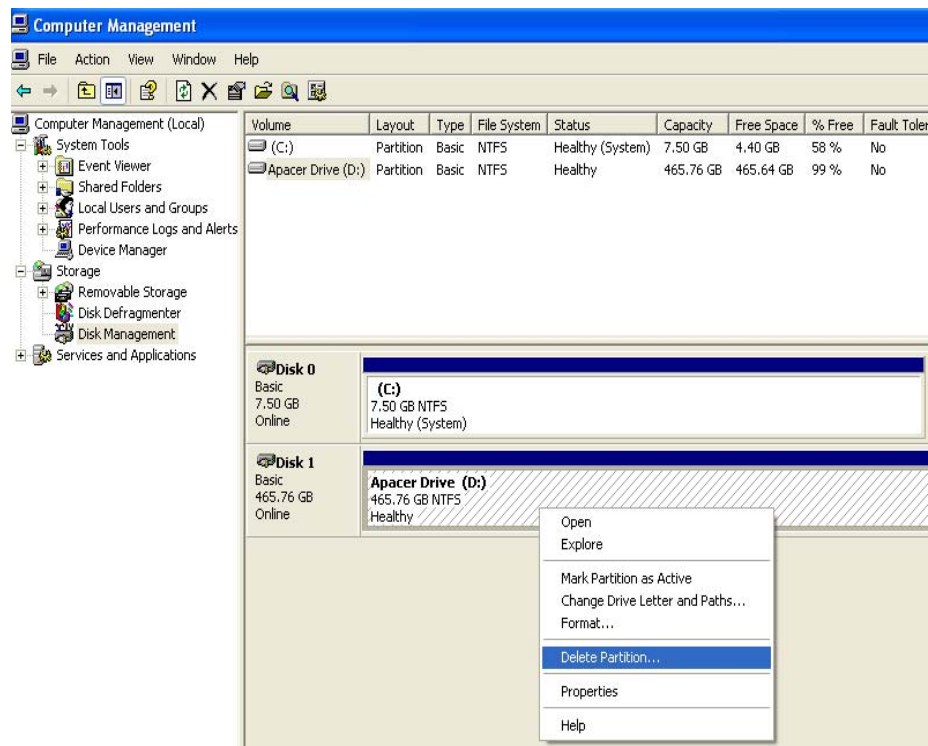


## Regarding Partitioning Your AC233 on Windows

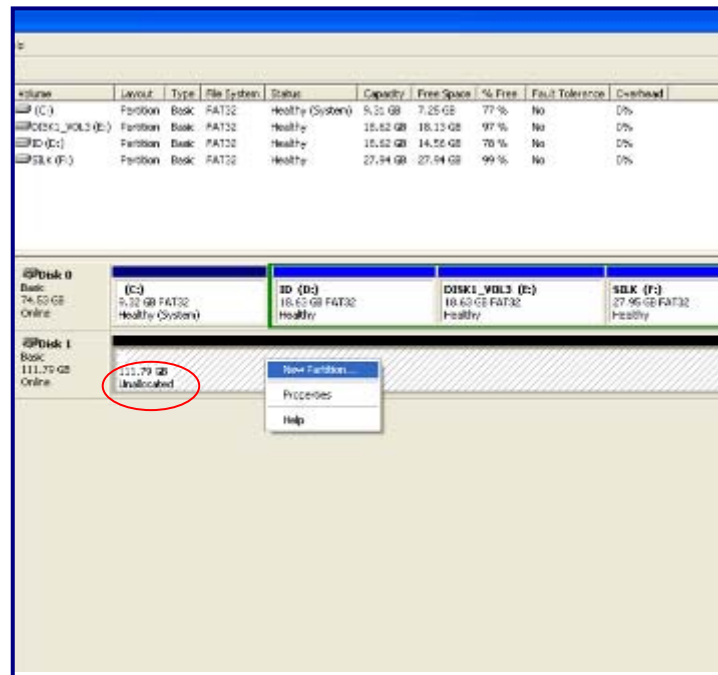
The Apacer AC233 portable hard drives have been partitioned before the release. In other words, the drive is ready-to-use once it is in the hands of a Windows user.

However, if there is a need for partitioning the drive again, please follow the steps below.

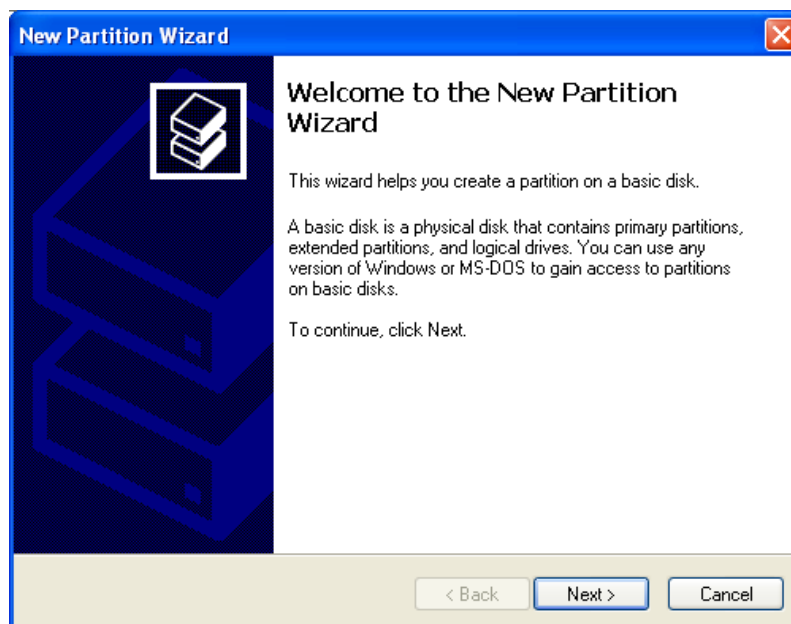
1. Please use the USB cable to connect AC233 to your computer.
2. Please go to "Start", right-click "My Computer" and then choose "Management" to enter the "Computer Management" window.
3. Select "Disk Management" and right click on the newly added disk. Then select "Delete Partition".



- Once it has become an "Unallocated" disk. Then, right-click and select "New Partition". On the window of "New Partition Wizard", click "Next".

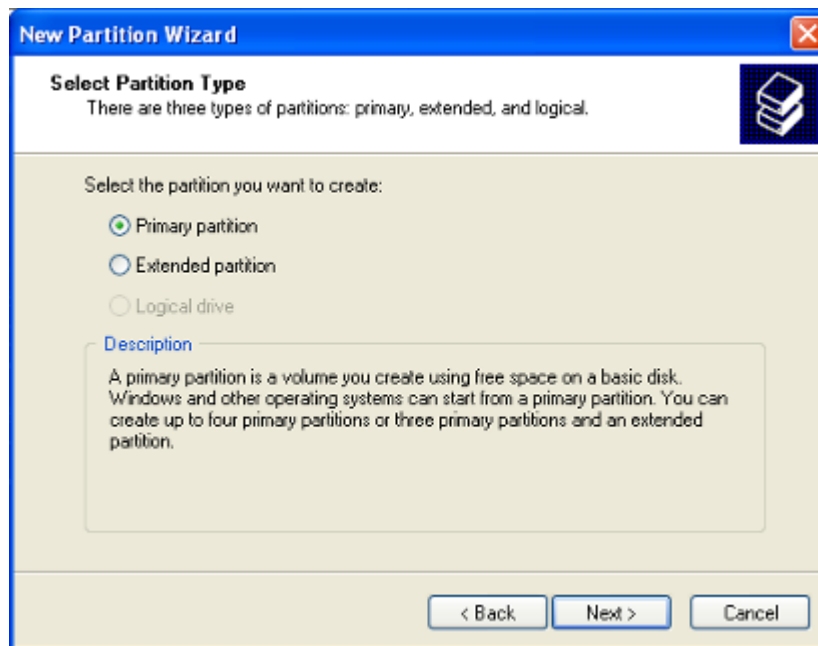


New Partition Disk



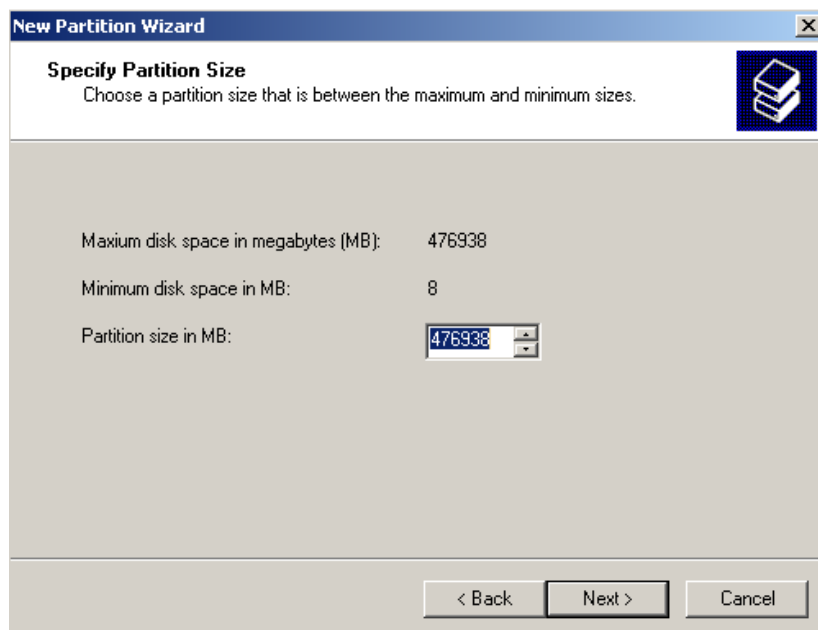
New Partition Wizard window

5. Choose "Primary Partition" and then press "Next".



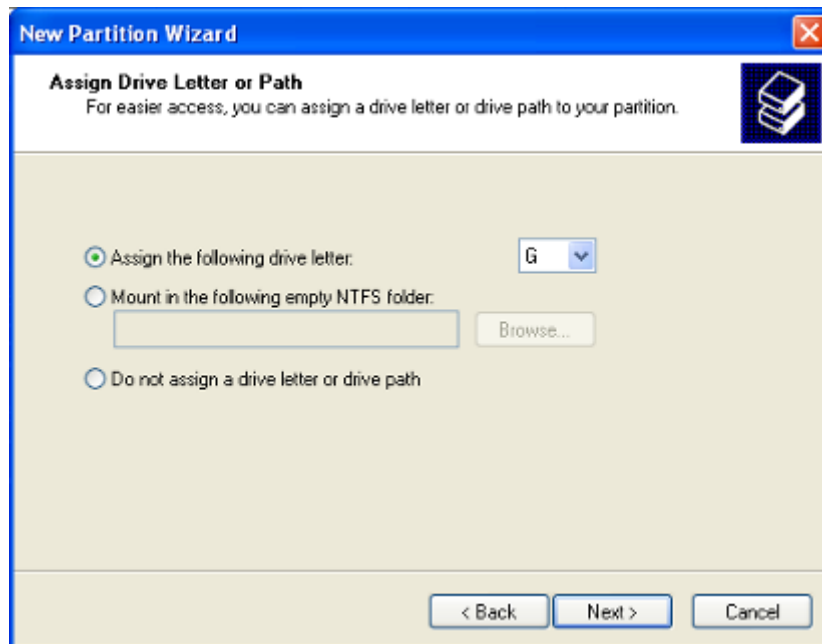
Choice of partition type

6. You can choose the partition size and then press "Next".



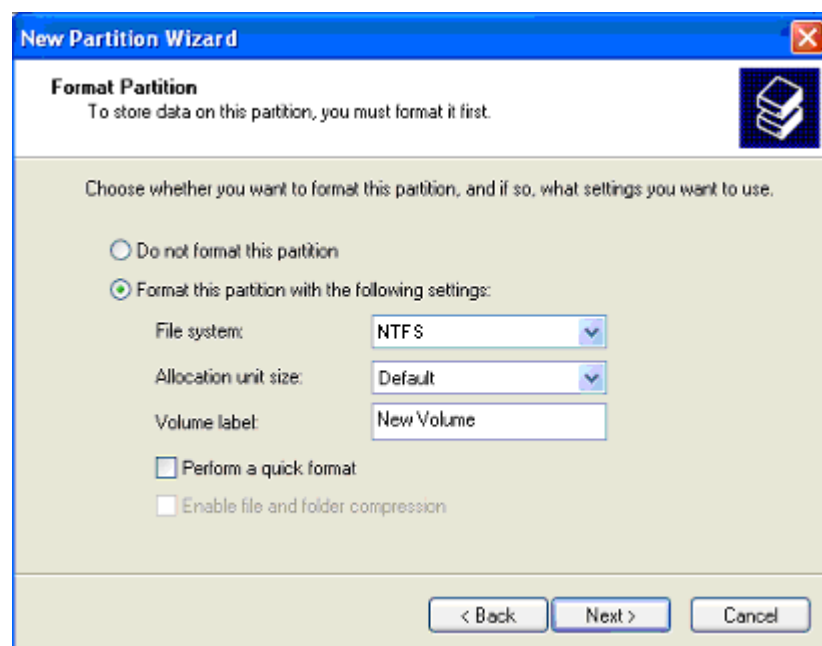
Assign partition capacity

7. Assign drive letter or path and then press "Next". In most cases, just select the default letter/path at the "Assign the following drive letter".



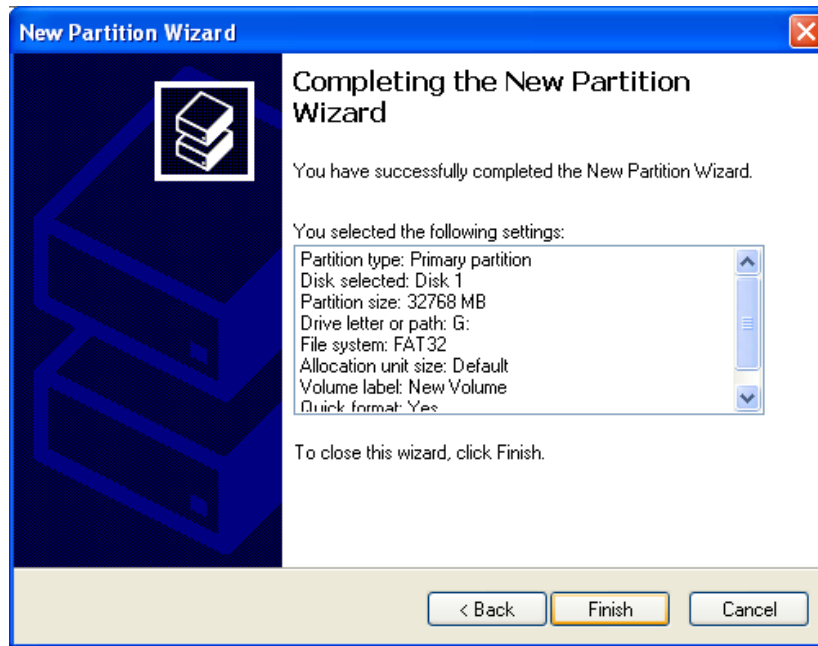
Assign disk path

8. Choose "File System" type. For NTFS, there is no limitation for allocation unit size, making it a preferred choice for drives with large capacity. However, for FAT32, individual single file size is limited to 4 GB (please be noted that the FAT32 option does not appear in large capacities).



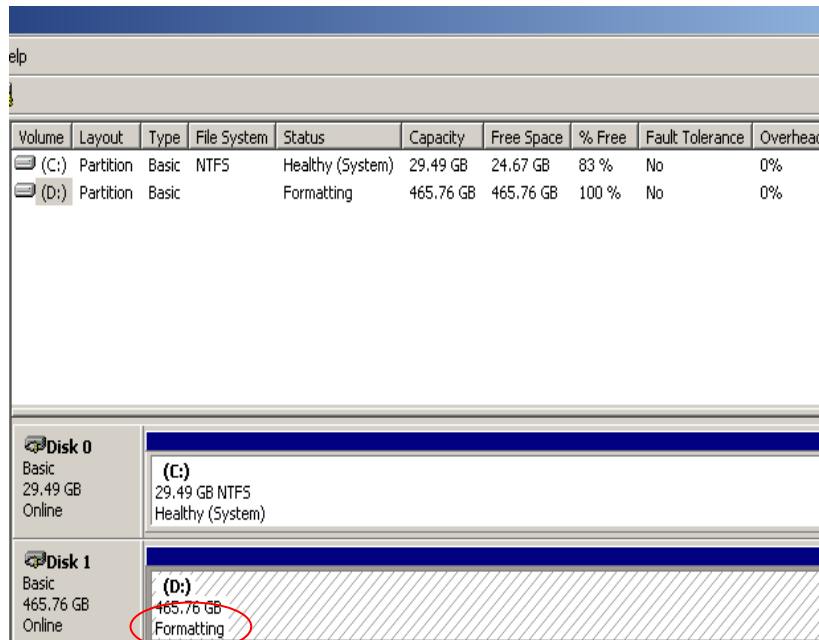
The choice of file system

9. Click "Finish".



Partitioning operation completed

10. Wait for the formatting process. Once the formatting is completed, the disk will be ready for use.



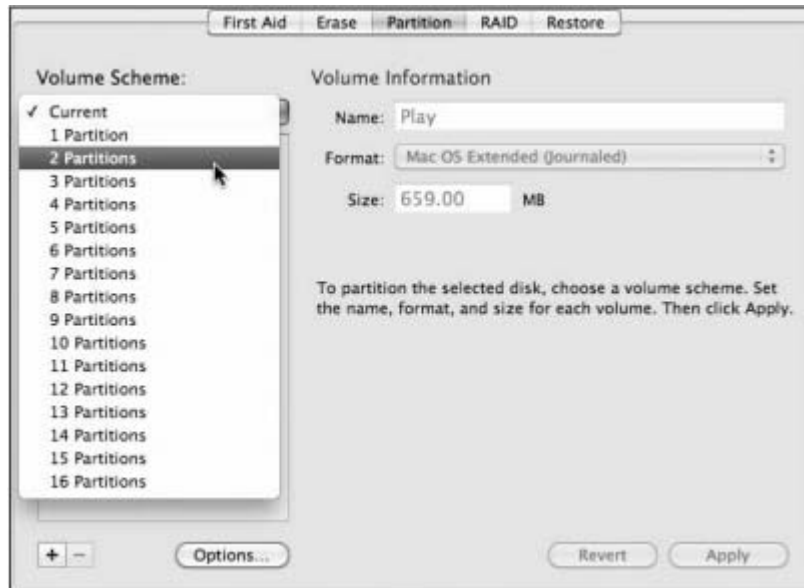
Notes:

There is a "Perform a quick format" option in a previous step where you choose the file system type for configuring your format partition. This format option is recommended only if the disk to be formatted is brand new, as it does not scan and format damaged sectors.

## For Mac Users

Please follow below steps to format your AC233:

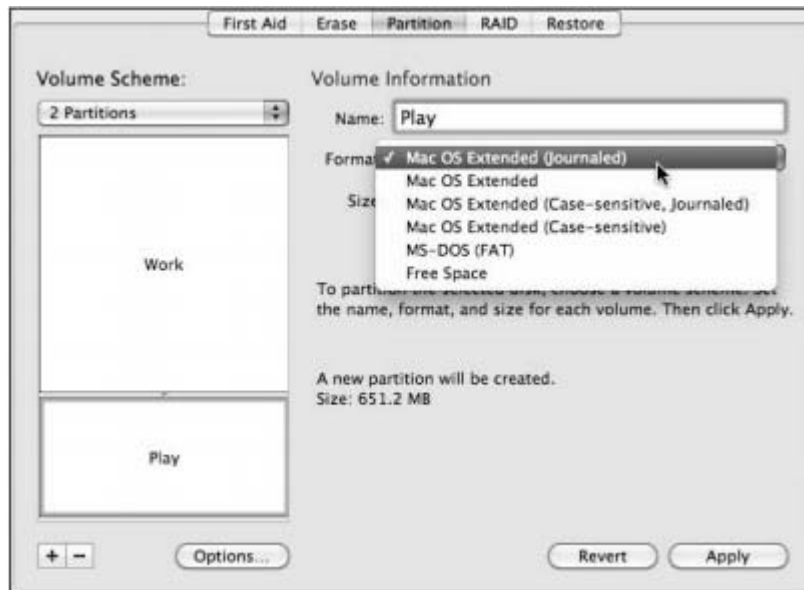
1. Make sure the drive you wish to format is currently attached to the computer, and then open **Finder/Applications/Utilities/Disk Utility**.
2. Select "Apacer AC233" from the column on the left.
3. Click the **Partition** tab to the right.
4. From the **Volume Scheme** pop-up menu, choose the number of partitions you want for this drive. You must choose at least one partition.



5. Once you have selected the number of partitions you desire, click the **Options** button at the bottom of the partition diagram to set the partition scheme.
6. Select your partition scheme, and then click the "OK" button to return.



7. Choose a name and volume format for each partition.



8. Once you have double-checked all your choices, click the “Apply” button. Partitioning and formatting takes only a few moments, and once the process is complete, you should see new volumes in the Disk Utility list and in the Finder.

**Note:**

1. Formatting will erase everything on the drive. If you have data or files that you want to protect and keep using, back them up in another storage before performing the formatting procedure.
2. In Windows operating systems, a FAT32 partition is limited to 4GB. For drives larger than this capacity, please reformat it with NTFS. For Mac users, use MAC OS Extended (Journaled) when using large size drive.

## λ Troubleshooting

If you encounter any difficulty in using the device, please check the following possible problems and their solutions for help at first.

Problem	Causes
<ul style="list-style-type: none"> <li>● Power will not turn on</li> </ul>	<ul style="list-style-type: none"> <li>● Make sure if the device is properly connected to the USB port on your computer.</li> <li>● Make sure if the USB port is working properly.</li> </ul>
<ul style="list-style-type: none"> <li>● The product is not recognized by computer</li> </ul>	<ul style="list-style-type: none"> <li>● Make sure that the device is properly connected to the USB port on your computer.</li> <li>● Power supplied to the device may not meet requirement. Try connecting the USB power sharing cable or the spare large end of the USB Y cable to a second USB port in your computer. Avoid connecting the product through a USB Hub unless the USB Hub is powered by a DC power adapter.</li> <li>● Make sure the USB cable is not defective.</li> <li>● Make sure the device has been formatted.</li> <li>● Make sure the operating system supports the file system of the device.</li> </ul>
<ul style="list-style-type: none"> <li>● Actual capacity is different from what is listed on package</li> </ul>	Small discrepancies are due to different file systems and algorithms used by various operating systems.
<ul style="list-style-type: none"> <li>● The product is working slowly</li> </ul>	Make sure that your system operates at USB 2.0 speed or above.
<ul style="list-style-type: none"> <li>● I installed an OS onto this product. Why can't I boot from it?</li> </ul>	The current USB 3.0 host devices do not support operating system boot up. In other words, you can not boot an operating system from this product.
<ul style="list-style-type: none"> <li>● I have difficulty with transferring large files</li> </ul>	Please double check if your drive is formatted in NTFS (the default for large sized drive is in NTFS), instead of FAT32. FAT32 is limited to 4GB file transfer size.
<ul style="list-style-type: none"> <li>● The drive can not be reformatted</li> </ul>	Double check if you are the Administrator of the computer system. If not, enable the Administrator user setting. To do so, go to "Control Panel" of your Windows operating system and find the administrator setting.



## λ Service and Support

Please contact our local distributor or customer service center for technical problems.

For details, log on to <http://www.apacer.com>

## λ Product Specifications

Product Model Name	AC233
HDD Interface	2.5" SATA I/II HDD
Device Interface	USB 3.0 (backward compatible with USB 2.0)
Capacity	500GB/750GB/1TB
Device Interface Transfer Rate	USB 2.0 interface: up to 480 Mbps USB 3.0 interface: up to 5 Gbps
Rotation Speed	5400 RPM
Cache	8M
LED Indicator	Light's on solid for power on, flashing for data access: red for USB 2.0; blue for USB 3.0
Power	USB-empowered
Operating System Supports	USB3.0: Windows XP/Vista/7/Linux Kernel 2.6.4 or above USB2.0: Windows 2000/XP/Vista/7 & Mac OSX 10.4 or later & Linux Kernel 2.6.4 or above
Certification	CE; FCC; BSMI
Dimensions	(L) 127.7 x (W) 80.4 x (H) 15 mm
Weight	152g (with HDD)
Accessories	USB 3.0 cable, Quick Start Guide

The contents of this manual are subject to change without prior notice for further improvements.